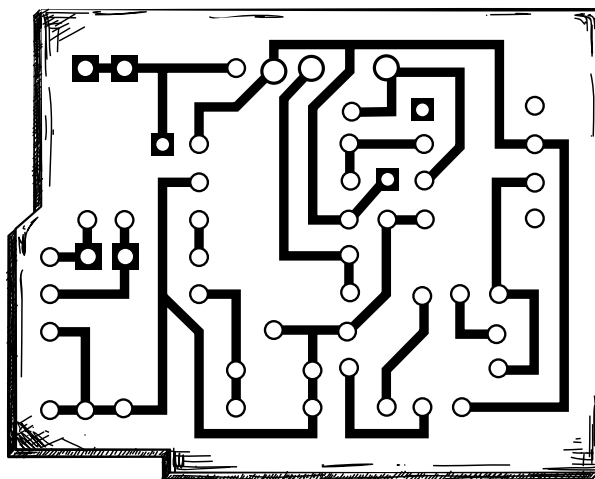


2

Montaggio dell'elettronica



Scopri tutto quello che puoi fare e condividi le tue creazioni su diwo.bq.com

Elenco dei componenti elettronici

2 x Laser

1 x C270 Logitech® HD Webcam

1 x Scheda di controllo bq ZUM BT-328

1 x Shield di potenza bq ZUM SCAN

1 x Stepstick Drivers A4988 4 layers

2 x Pezzo stampato canalina per cavo laser: 80 mm

1 x Pezzo stampato canalina per cavo motore: 240 mm

1 x Pezzo stampato coperchio parte elettronica

1 x Cavo micro-USB

1 x Alimentatore 12 V 1,5 A

1 x Mascherina frontale metacrilato

1 x Pezzo stampato di supporto per la mascherina

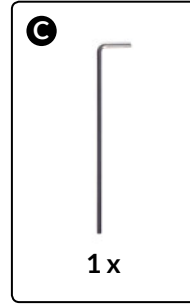
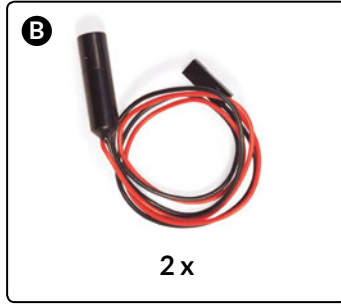
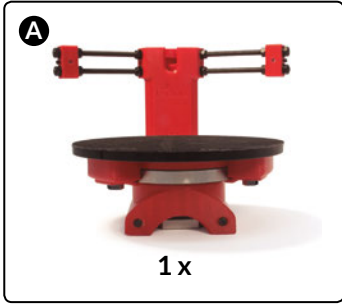
1 x Foglio mascherina a scacchiera

2 x Vite M3 x 10 mm - DIN 912 classe 8.8 nera

2 x Dado M3 - DIN 934 classe 8 nero

1

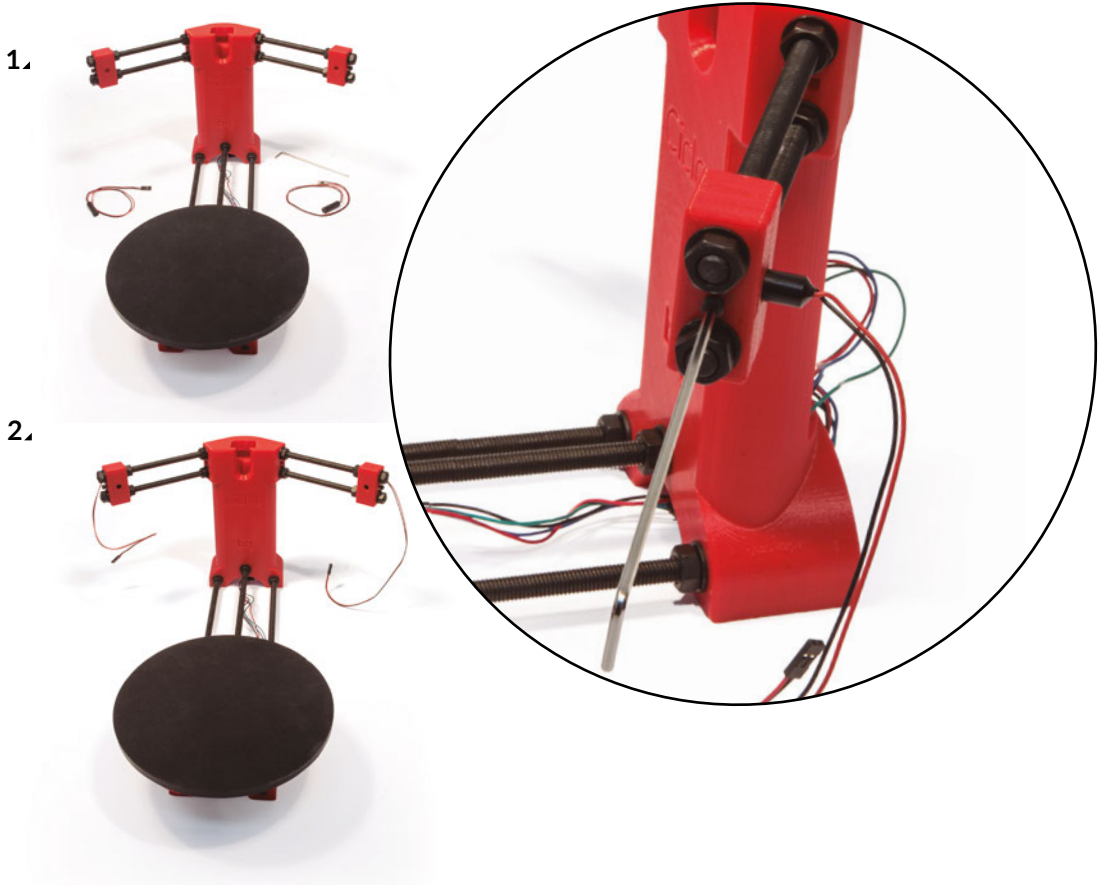
Inserire i laser



A Struttura montata

B Laser

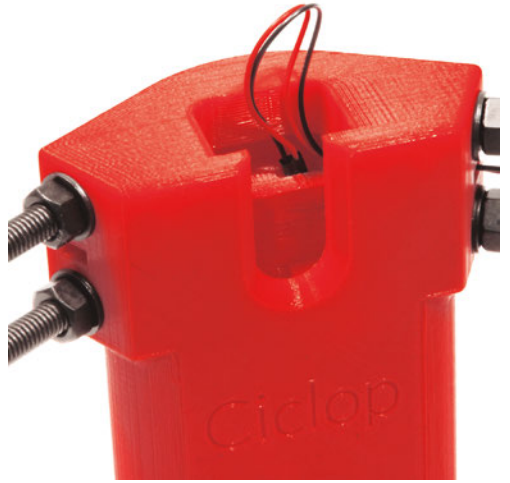
C Chiave Allen



3.



4.



5.

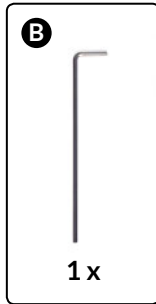
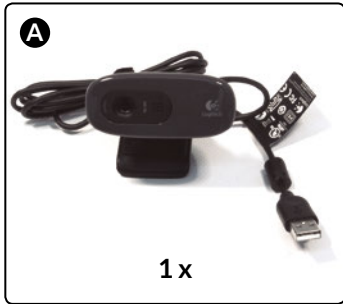


6.



2

Preparare la fotocamera



È necessario un cacciavite a stella (3).



A C270 Logitech® HD Webcam

B Chiave Allen

2.



3.



4.

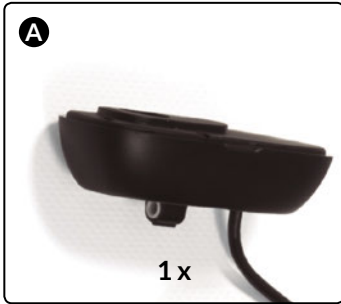


5.



3

Montare la fotocamera



A C270 Logitech® HD Webcam senza complementi

B Gruppo della fase 1

1.



2.



3.



4.

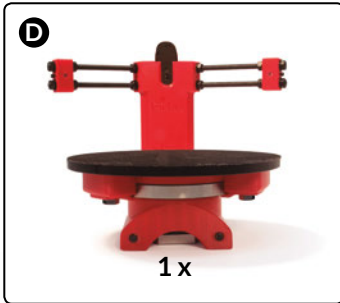
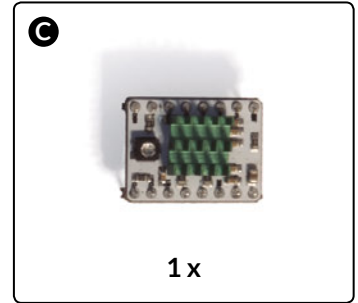
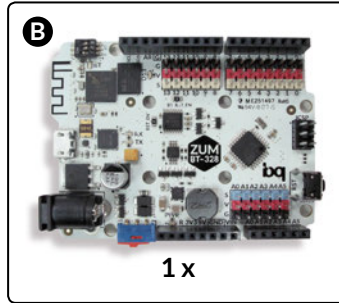
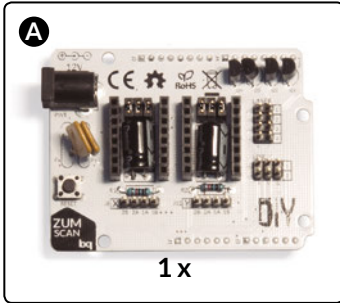


5.



4

Montare i componenti elettronici: bq ZUM BT-328 + ZUM SCAN

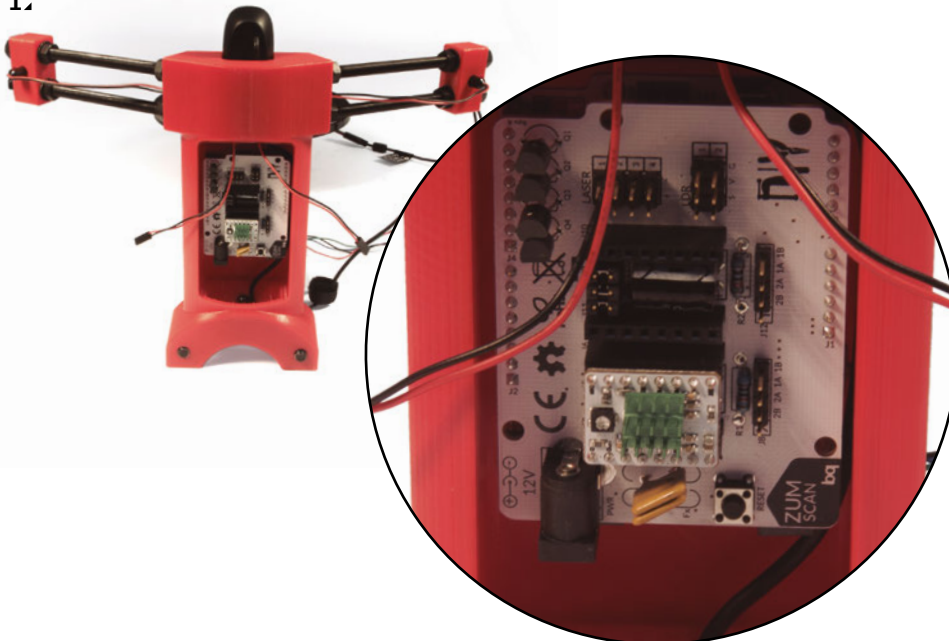


- A** Shield di potenza bq ZUM SCAN
- B** Scheda di controllo bq ZUM BT-328
- C** Stepstick Drivers A4988 4 layers
- D** Gruppo della fase 3



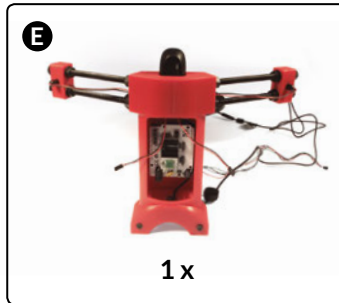
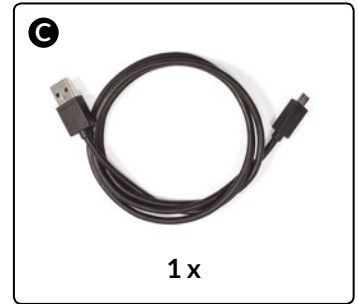
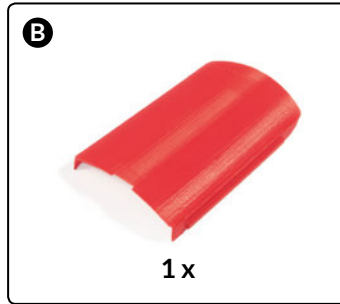
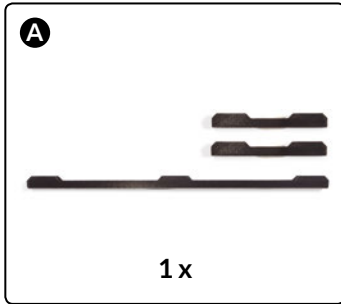
I componenti A, B e C sono forniti già montati.

1.



5

Connessione e guida dei cavi

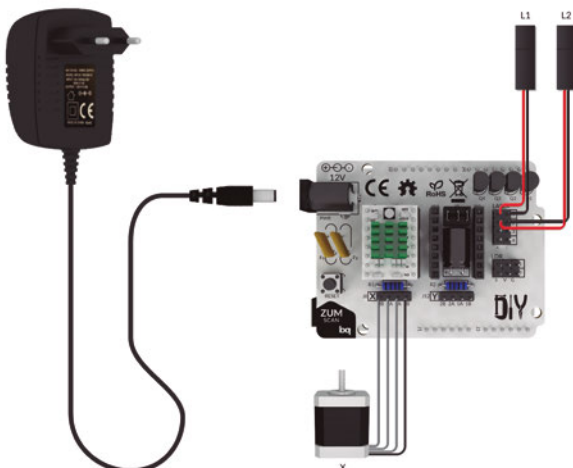


- A** Pezzo stampato canalina per cavo laser e per cavo motore
- B** Pezzo stampato coperchio parte elettronica
- C** Cavo micro-USB
- D** Alimentatore 12 V 1,5 A
- E** Gruppo della fase 4



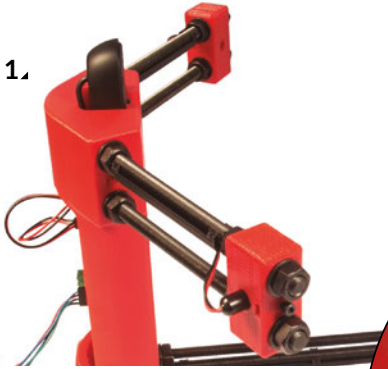
Al momento di collegare i connettori dei motori alla scheda, fare attenzione all'orientamento del cavo nero. Il colore degli altri cavi può variare.

Diagramma di connessione

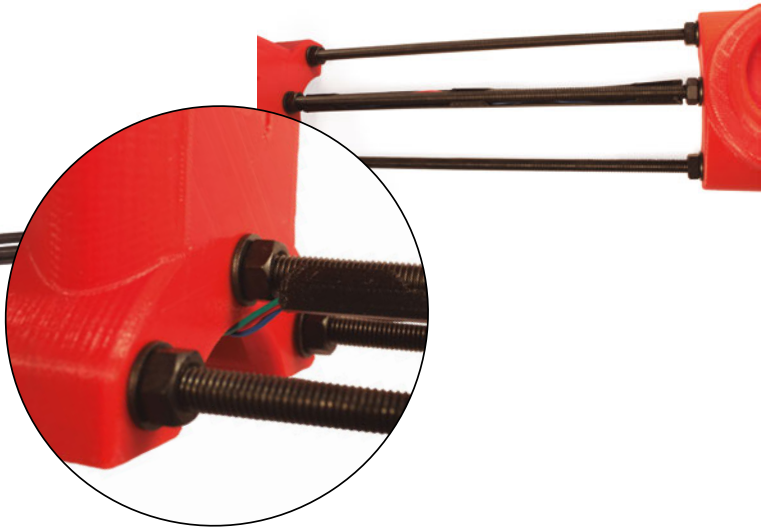


Collegare l'estremità del cavo micro-USB alla scheda di controllo bq ZUM BT-328 e l'estremità USB al computer.

1.



2.



3.



4.

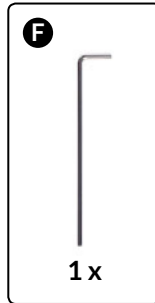
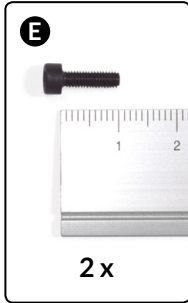
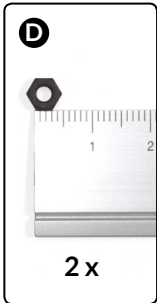
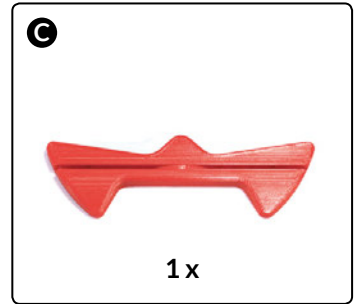
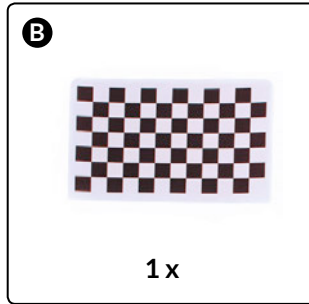
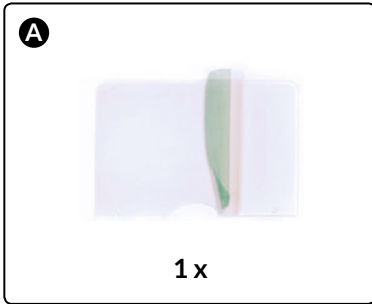


5.



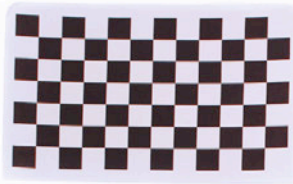
6

Montaggio del foglio di calibrazione



- A** Mascherina frontale in metacrilato
- B** Foglio a scacchiera
- C** Pezzo stampato di supporto per la mascherina
- D** Dado M3
- E** Vite M3 x 10 mm
- F** Chiave Allen

1.



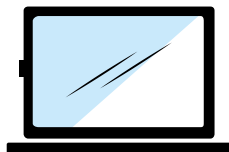
2.



ATTENZIONE: è importante seguire l'orientamento dei quadrati neri (2).

Colloca solo uno degli adesivi a scacchi sulla base. La seconda unità è di ricambio.

3.



Il montaggio di Ciclop è terminato. Prima di iniziare a utilizzare lo scanner, è necessario installare il software. Attenersi alle indicazioni di installazione e ai requisiti consigliati su:

www.bq.com/ciclop